

# Yayasan Inisiatif Dagang Hijau (YIDH)

Yayasan Inisiatif Dagang Hijau (IDH) is a non-governmental organization that promotes the transformation of agricultural markets towards sustainable, deforestation-free, and farmer-inclusive commodity production.

IDH acts as a convener for stakeholders in both the landscape and national levels, facilitating the development of various business models and sustainable agricultural practices for actors along the supply chain, in an effort to realize a deforestation-free landscape.

IDH works in three key forest landscapes in Indonesia: Aceh, West Kalimantan, and Papua. In these three landscapes, IDH formulates optimal land use efforts to ensure that the production of key commodities, such as palm oil, cocoa, and non-timber forest products (NTFPs), not only achieves productivity and economic income, but also aligns with forest and environmental protection efforts, and is inclusive of farming communities.



Through an innovative approach, IDH designs and co-finances with stakeholders, including global commodity buyers requiring deforestation-free supplies, to implement the PPI business model in the landscape. Through collaborative efforts, the implementation of this business model is expected to promote deforestation-free supply chains, create jobs, increase community and regional incomes, improve environmental and forest quality, and promote gender equality.

## IDH's Roles



### Advocacy

for deforestation-free and inclusive market and supply chain transformation



### Liaison

between stakeholders at the landscape level (district and province) to improve commodity governance



### Facilitator

multistakeholder collaboration and cooperation



### Co-financing

for activities that support the achievement of development targets at the landscape level



### Technical Advice

to enhance sustainable production activities, landscape protection, and social inclusion

## PPI Compact: A Landscape Approach

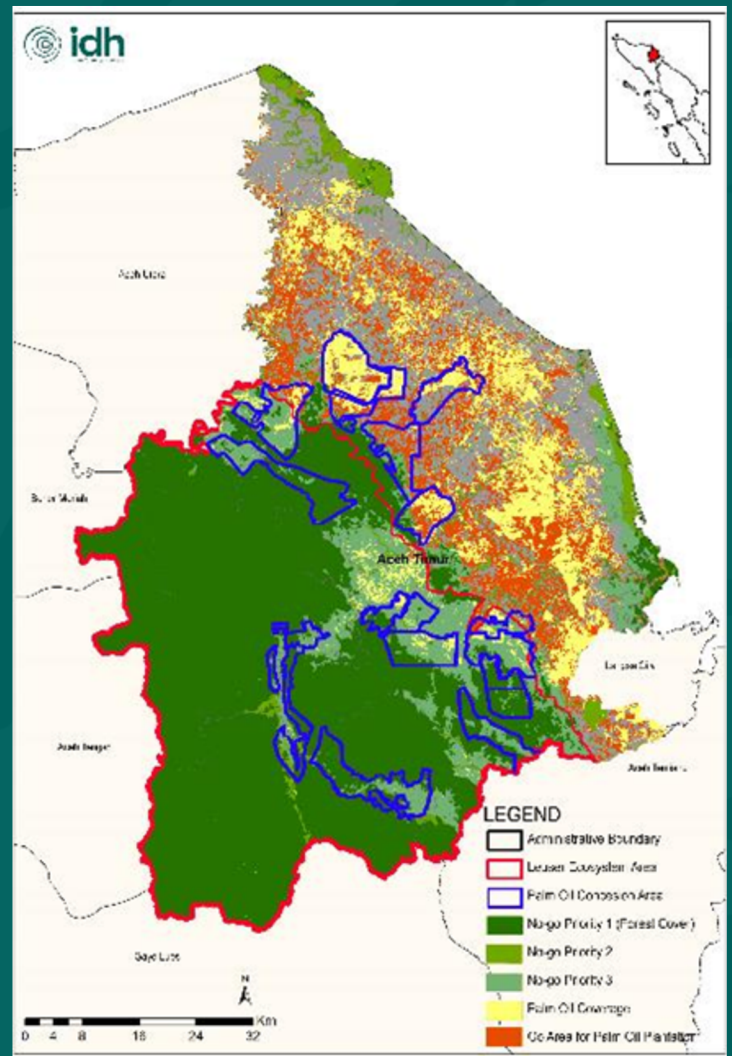
IDH promotes landscape-based development strategies based on the principles of "Production, Protection, Inclusion" (PPI), through close collaboration with governments, private sector, and civil society organizations. IDH encourages optimal land use to achieve the various PPI visions and agendas of various stakeholders, through a shared vision for sustainable landscapes known as the PPI Compact.

The PPI Compact facilitates a balance between sustainable commodity production, forest and environmental protection, and social inclusion to ensure equity and community well-being. Within a landscape, activities to achieve the PPI Compact objectives are coordinated and reported by multi-stakeholder institutions within the landscape.

## IDH's Landscape Approach Begins with a Go/No Go Analysis

### Go-No Go Analysis

Through the Go-No Go Analysis, which is a multi-criteria analysis considering regional suitability, HCV/HCS (High Conservation Value/High Carbon Stock) areas, spatial planning, and socio-ecological aspects, priority development areas for Production, Protection, and Inclusion can be formulated.



## Deforestation-Free Supply Chain and Farmer Inclusion

With global market increasingly demanding deforestation-free and traceable commodities, such as palm oil, cocoa, coffee, and rubber, commodity production carried out through expansive forest clearing will cause a region to become uncompetitive and existing development to be unsustainable.

Various global market standards require deforestation-free supply chains, such as the voluntary NDPE (No Deforestation, No Peat, No Exploitation) standard and regional regulations like the European Union Deforestation Regulation (EUDR). The NDPE requires supplies from forest areas cleared before 2015, while the EUDR requires commodities to originate from forests cleared before 2021, proven by a traceability system.

Realizing a deforestation-free and inclusive supply chain for independent smallholders is the focus of IDH, which is then implemented through a multi-stakeholder approach at the national and sub-national levels.

Various approaches to promote deforestation-free supply chains:



### **Collaboration between Government, Companies, and Civil Society**

Promoting good landscape governance to implement PPI principles through multi-stakeholder platforms



### **Multi-Stakeholder Deforestation Monitoring and Response System**

Facilitate collaboration between stakeholders in monitoring forest cover and deforestation response at the landscape level - in both forest and other land use areas.



### **Facilitating Land Legality and STDB for Traceability of Smallholder Farmers**

Land legality and STDB are markers of deforestation-free farmer's land and are used as traceability markers.



### **Business Model for HCV/HCS Protection in Production Zones**

Developing innovative business and financing models for multi-forestry businesses in concessions connected to global supply chains and optimizing environmental services

For more information,  
contact Nassat Idris ([idris@idh.org](mailto:idris@idh.org))