

Sustainable  
Palm Oil  
**Dialogue**  
Europe



# Welcome to the Sustainable Palm Oil Dialogue 2026

*Resilience in Palm Oil  
Thriving in a Turbulent World*

Chester Zoo, United Kingdom  
9 June 2026





| Time          | 🌱 Climate   | 🌿 Nature  | 👤 People   |
|---------------|---|---|--|
| 08:30         | 🚶 Delegate Arrival, Registration & Welcome Refreshments — Reception Area & Joinery  |   |  |
| 09:00         | Opening: Welcome<br>Welcome & Opening<br>📍 Atrium, The Square   |   |  |
| 09:05         | Keynote Speaker   |   |  |
| 09:35         | Plenary Session I : Defining Resilience<br>📍 Atrium, The Square   |   |  |
| 10:15 –11:15* | <b>Breakout I — Climate</b><br>Low Carbon Palm Oil: How to Decarbonise at Mills and in Smallholder Farms<br>📍 Garden Room, The Oakfield | <b>Breakout I — Nature</b><br>Measuring Impact & Nature Engagement as Downstream Responsibility<br>📍 Atrium, The Square   | <b>Breakout I — People</b><br>Driving Systemic Change on Human Rights in Palm Oil Supply Chains Through Scale and Collaboration<br>📍 Smithy & Tack, The Square |
| 11:15         | 🚶 Mid-Morning Refreshments — Reception Area & Joinery   |   |  |
| 11:40–12:40*  | <b>Breakout II — Climate</b><br>Linking Landscape Initiatives to GHG Reporting Frameworks<br>📍 Smithy & Tack, The Square                | <b>Breakout II — Nature</b><br>Landscape Action on Nature for Resilience: Progress and Gaps in Palm Oil<br>📍 Garden Room, The Oakfield  | <b>Breakout II — People</b><br>From Boycotts to Buy-In: How to Transform Consumer Perceptions on Palm Oil<br>📍 Atrium, The Square                              |
| 12:40         | 🍽 Lunch — Finger Buffet, Reception Area & Joinery   |   |  |
| 13:40         | Plenary Session 2: Beyond EUDR: From Legal Compliance to Real-World Change<br>📍 Atrium, The Square                                      |   |  |
| 14:20–15:20*  | <b>Breakout III — Climate</b><br>Closing the Loop on Climate Responsibility<br>📍 Smithy & Tack, The Square                              | <b>Breakout III — Nature</b><br>Beyond 2025 DCF Commitments: Transitioning to Resilient Palm Oil Supply Chains (please note 80 min ending at 15.40 with coffee in the room)<br>📍 Atrium, The Square | <b>Breakout III — People</b><br>The Emerging Business Case for Smallholder Inclusion in Deforestation-Free Markets<br>📍 Garden Room, The Oakfield              |
| 15:20         | 🚶 Afternoon Refreshments — Reception Area & Joinery   |   |  |
| 15:40         | Plenary Session 3: The Road to 2030: Scaling Impact in Sustainable Palm Oil<br>📍 Atrium, The Square                                     |   |  |
| 16:20         | Closing Remarks & Event Close   Delegates depart via Private Events Entrance  |   |  |





# **BREAKOUT PEOPLE 1**

## **(10.15 - 11.15)**



## Breakout Session 1: People

Driving Systemic Change on Human Rights in Palm Oil Supply Chains  
Through Scale and Collaboration



Moderator

**Bradley Graham**  
Principal Project Manager,  
Proforest



**Suzan Cornelissen**  
Programme Lead,  
CNV Internationaal



**Nadine Stueber**  
Global Responsible Sourcing  
Lead Palm Oil,  
Nestlé



# What we will cover



1. Introduction to the Smart-Mix Approach to Addressing Human Rights
2. Application in Malaysia & Indonesia
3. Within Supply Chain Actions
4. Collective Actions At Scale
5. Q&A

# Human Rights Risks & Palm Oil Production



Effects on  
Workers' Rights



Effects on  
Local Peoples' Rights



Effects on  
Smallholder Livelihoods



# Evolving Expectations on Companies

## Soft Law (Voluntary HRDD)

United Nations  
Guiding Principles on  
Business and Human  
Rights (UNGPs)

Organisation for Economic  
Co-operation and  
Development (OECD)

2011

2011  
2016  
2018



## Mandatory HRDD (mHRDD)

Dutch Child  
Labour Law

German Act on  
Corporate Due  
Diligence in  
Supply Chains

2017

2019

2021

2024  
and  
Beyond

French Corporate  
Duty of Vigilance  
Law



US Customs and  
Border Protection Supply Chain  
DD and Forced Labor Enforcement

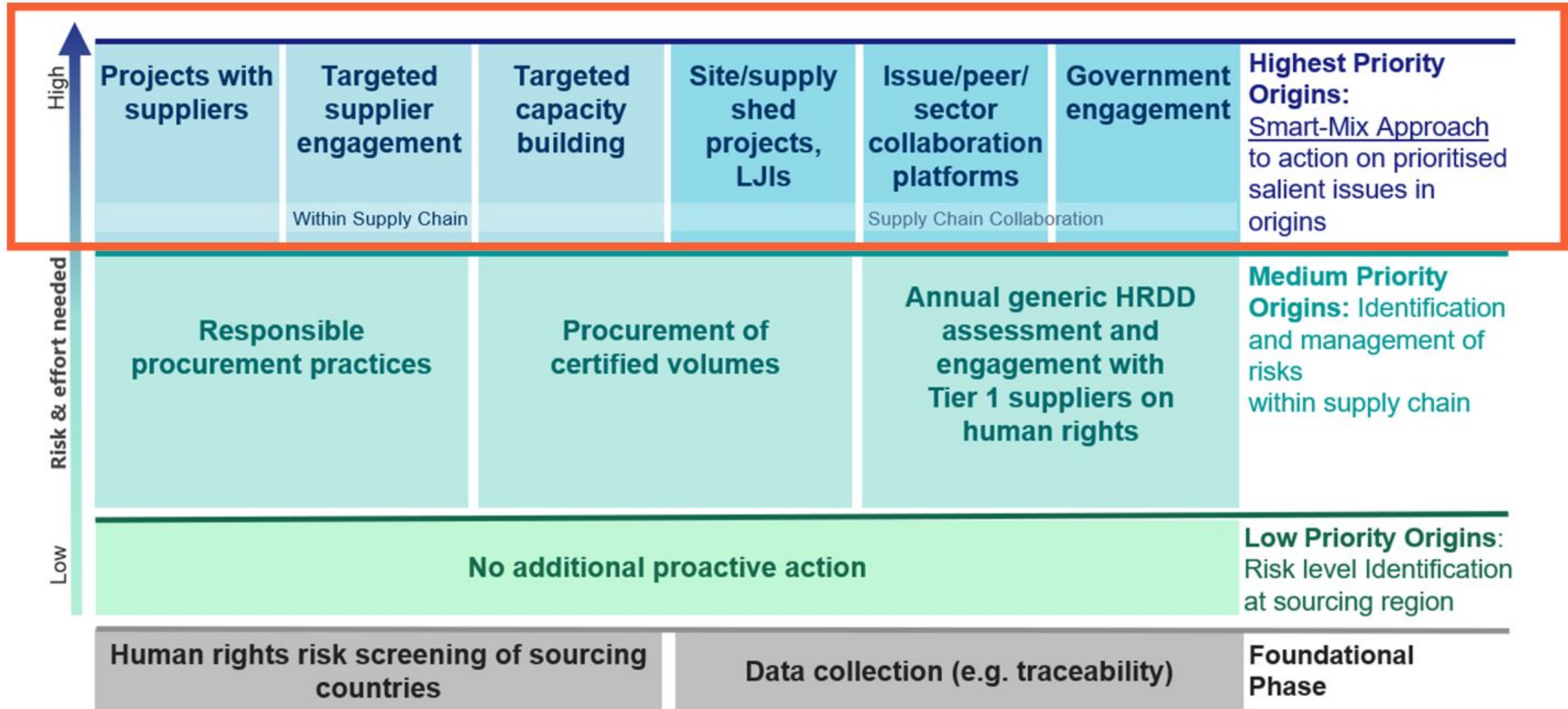
EU Corporate Sustainability  
Due Diligence and  
integration of mHRDD  
legislation for all EU  
Member States

EU Forced Labour Ban

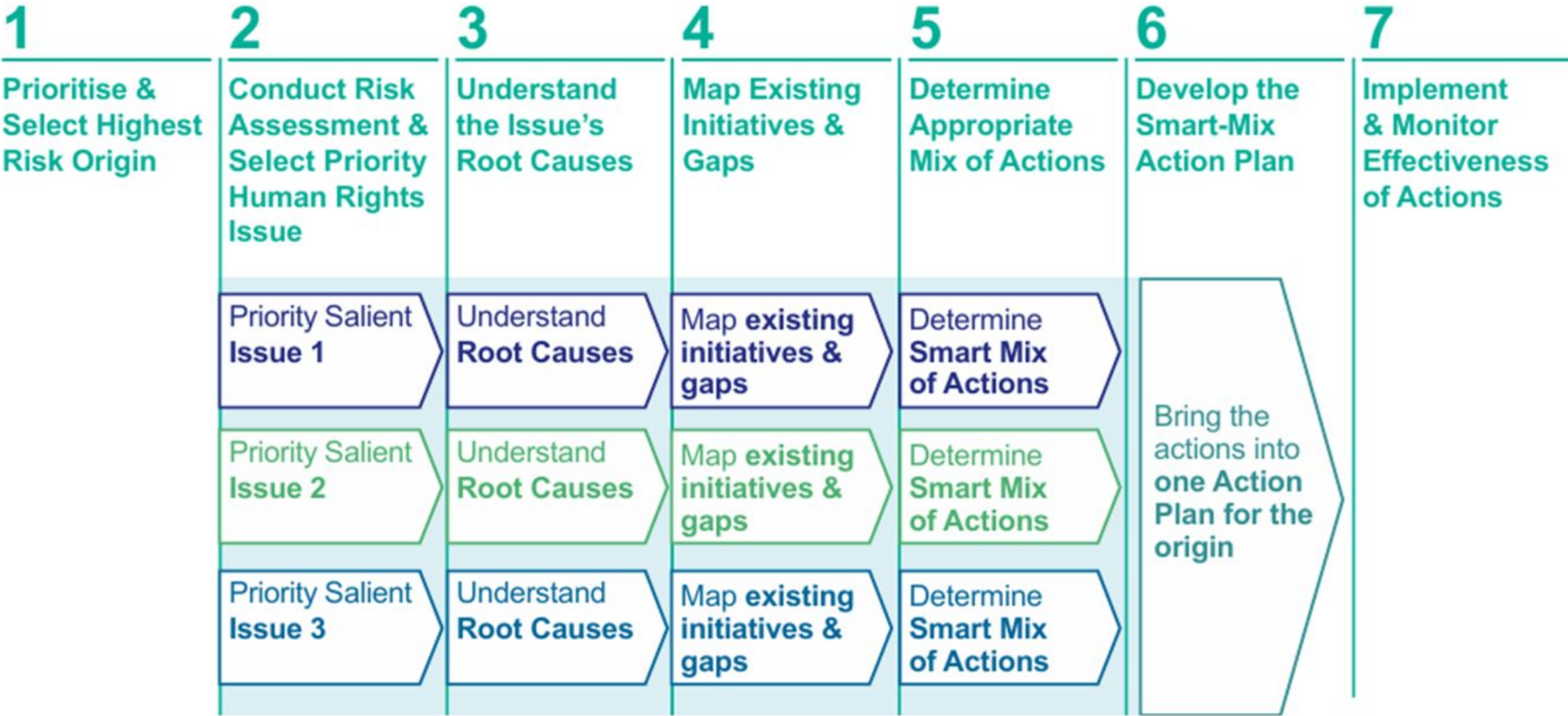


# The Smart-Mix Methodology

# Framework for Action on Human Rights in Agricultural Supply Chains



# Taking a Smart-Mix Approach to Action on Human Rights



To read about the Smart Mix Approach more in depth, please refer to Proforest Briefing Note 17 [Taking a Smart Mix approach to Action on Human Rights](#)



# Types of Actions included in a Smart Mix



# What is the value of the Smart Mix Approach to addressing Human Rights?

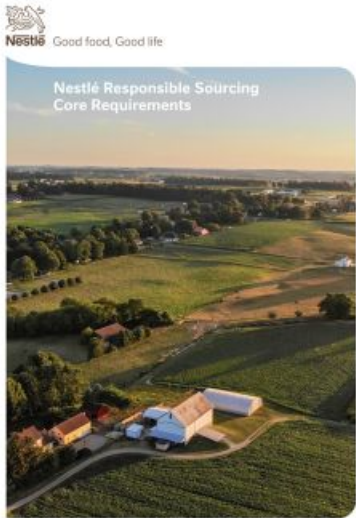


- **Linking downstream companies HRDD in supply chain to impact on the ground**
- **Understanding the root causes of salient issues and developing context-specific responses that address systemic challenges and build resilience**
- **Bridging the gap from conducting assessments to taking actions by offering a practical pathway for developing tailored solutions**
- **Leverage existing efforts and bridging operational gaps through collaboration to mitigate risk and build resilience at scale**

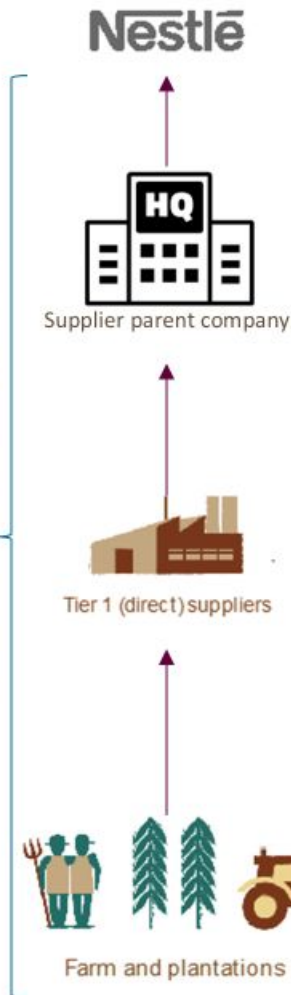
**Applying the  
Smart-Mix to Palm  
Oil in Southeast  
Asia**

# Driving Action within our supply chain

Our approach to mitigating human rights risks within our Nestlé palm oil supply chains is informed by the Responsible Sourcing Framework.



## TRACEABILITY



### SUPPLIER HREDD MATURITY ASSESSMENT

We assess the HREDD systems of our direct suppliers (corporate level) and help them improve.

### TIER 1 SUPPLIER AUDIT PROGRAM

Site audits carried out by independent audit firms using SMETA methodology.

### ORIGINS ASSESSMENTS

We work with partners to assess upstream origins against our Nestlé Responsible Sourcing Core Requirements through validated delivery mechanisms.



### Supplier KPI

Number of suppliers with adequate HREDD management systems

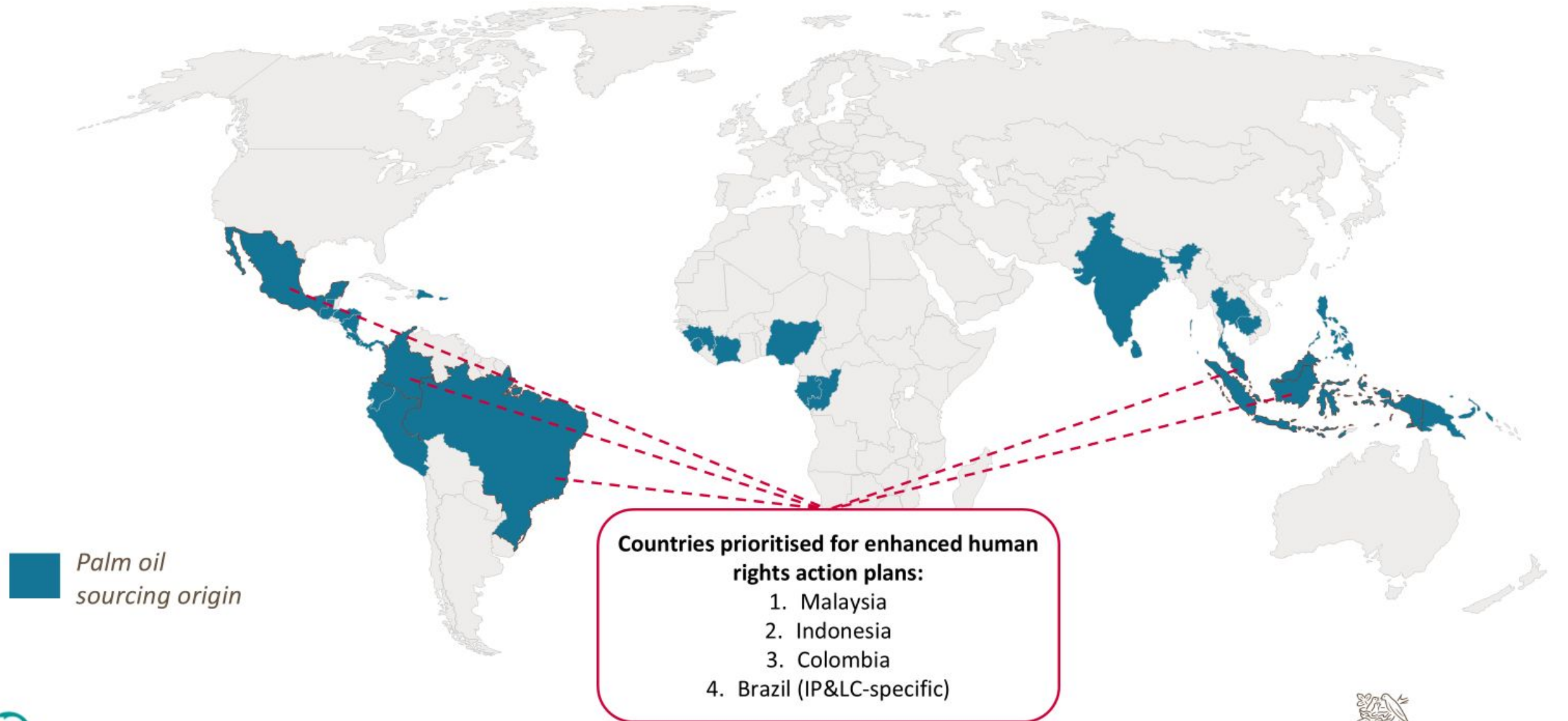
Number of material non-conformities related to salient human rights issues identified through third-party audits of our direct suppliers and addressed [from 2025 as per salient issue action plans]



### Origins KPI

Percentage of volumes responsibly sourced

# Determining Priority Origins





### Malaysia: Selected Priority salient issues

1. Forced Labour risks for foreign workers



2. Child Labour – Sabah



3. Worker Voice for migrant workers



### Indonesia: Selected Priority salient issues

1. Indigenous Peoples Land Rights



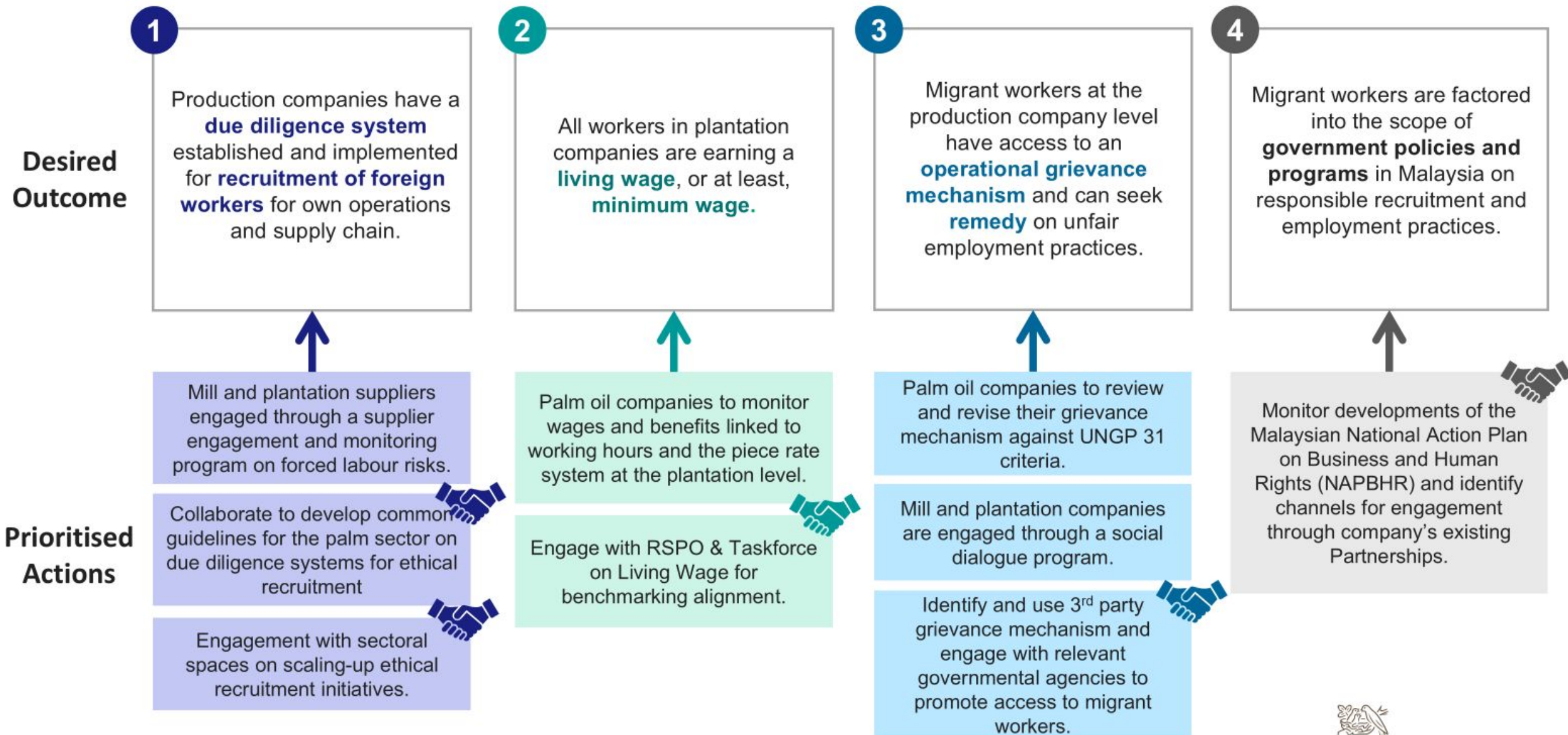
2. Forced Labour



3. Human Rights Defenders (HRDs)



# Forced Labour in Peninsular Malaysia



See [Annex 7](#) for more detail on prioritised Forced Labour actions

# Minimum Reporting Requirements as a structured approach

1



**Streamline** how T1 suppliers of Nestlé take action, monitor and report on sustainability-related risks in their own operations and supply chain.

2



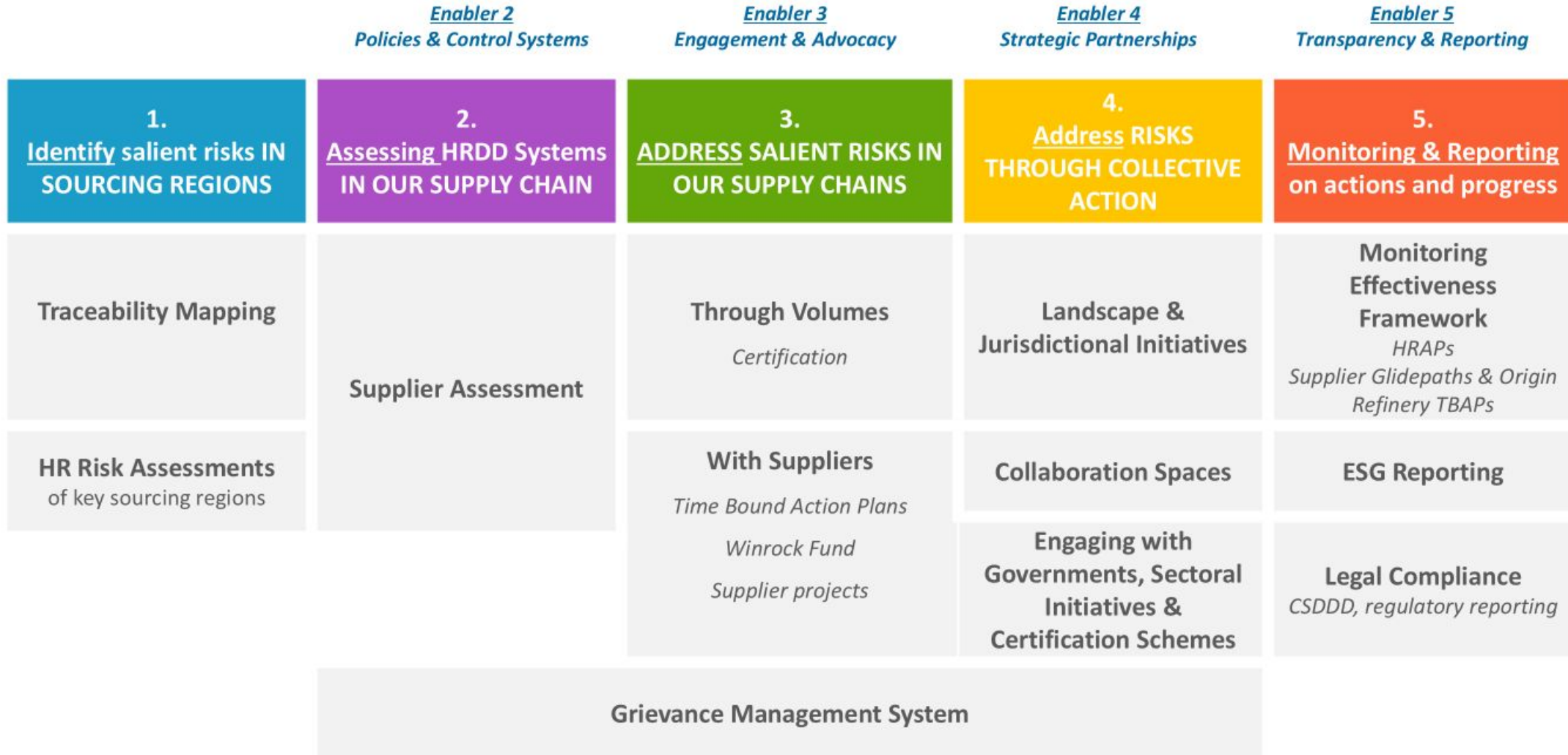
Provide a **structured approach** to address salient environmental and human rights issues by outlining specific activities and recommendations relevant to the context of the refinery and its supply base.

3



**Support** and strengthen the internal capacity of T1 suppliers on their HREDD systems at the production level.

# Addressing human rights risks in Nestlé palm oil supply chain



# **Collective Actions at Scale**

# Introduction CNV Internationaal



Trade union organization since 1967 working in Asia, Africa and Latin America



Labour rights in supply chains based on HRDD principles; agrifood, minerals and textile



Focused on Collective Action in a multi stakeholder approach

## Most salient labour rights challenges in the palm oil sector

- Lack of union representation and social dialogue
- Low number of Collective Bargaining Agreements
- Wages below the minimum wage
- Risks of Forced Labour due to unpaid overtime, unrealistic targets, and missing of proper contracts for casual workers
- Risks of Child Labour


Key factors limiting progress on labour risks in the palm oil sector -

- Absence of real workers' insights through the proper channels of worker representation
- No resources to build trust among actors in the supply chain
- Lack of scalable, sectoral solutions



# Worker voice & social dialogue = missing link in HRDD

- Worker voice as early risk detection in supply chains
- Social dialogue and collective bargaining agreements lead to real improvements for workers and creates sustainable change
- Collective bargaining agreements work as accountability mechanisms
- Worker engagement creates trust and stability; reduced conflict and improves productivity

 *Avoiding dialogue or sometimes even actively work against unionization create more risks in palm oil supply chains*

# What works at scale: proven methodologies

The Bangladesh Accord – addressing labour rights in a timeframe of 5 years

- More than **1,600–1,800 factories** were inspected.
- Tens of thousands of fire, electrical, and structural hazards were identified and addressed.
- Around **84–85% of the safety hazards** found in the initial inspections had been fixed by the end of the first five years.
- Millions of garment workers were covered, and large numbers received safety training.
- The Accord reported **no deaths from fire or structural collapse in factories where inspections and remediation had been completed.**

**The success factors are the binding agreements and shared accountability across multiple companies in the garment supply chain.**

**The model can be replicated in the palm oil sector, by setting clear objectives and taking joint action.**

# The case for change – scaling up in palm oil

Palm oil companies under RSPO have set clear standards (P&C); the challenge remains delivery at scale, and system wide risks require coordinated system-wide solutions.

In practice –

- Joint impact projects across supply chains
- Pre-competitive collaboration between companies and unions at landscape/regional level
- Worker-voice data used for monitoring and remediation (Fair Work Monitor)
- Sector-wide agreements, e.g. provincial living wage agreements through collective bargaining

# How do we scale up in the palm oil sector?

## Landscape level –

- **Align unions, growers, traders and buyers**
- **Combine supply chain leverage with worker voice and insights**
- **Share responsibility and investment**
- **Set-up realistic and measurable KPI's for improvement within a 5 year horizon**

## RSPO as a scaling platform –

- **Move from individual action to collective implementation**
- **Pilot solutions with unions and groups of companies**
- **Ensure credibility and durability through social dialogue and collective bargaining agreements**
- **Scale what works through shared learning and adaptation**

# From pilot to scale: sectoral living wages approach

## Minimum wages are not living wages

- Creates turn over of staff, productivity challenges, reputational risks, and a supply chain that is uncertain

## Our approach

- Data: worker-level wage data provides a living wage gap analysis
- Coalition building: align buyers, growers and unions at provincial level
- Sectoral negotiation: establish a sector-wide wage roadmap, including the right to freedom of association and collective bargaining, and purchasing commitments

## The impact of collective action

- Credible living wage pathway, not just commitments
- Reduced HRDD risk exposure
- Shared cost and a level playing field for all actors involved in the supply chain
- Scalable solution across different sourcing regions

A sectoral approach turns living wages from a company ambition into a sectoral solution supported by social dialogue and purchasing practices combined.

# What can you do?

## Engage

Reach out to learn more about proposed actions.

If your company is ready to contribute, **contact** Profore for potential opportunities for i

## Requesting Human Rights Action Plans for Companies



## Engage with your supply

Identify salient issues and root causes with your suppliers in meaningful ways, build on their existing efforts and provide further support to them.

## Disseminate

Share the approach within your organization and spaces your company is present in to act as a catalyst for scaling up engagement. Highlight identified actions in Vietnam and the Smart-Mix Approach.

## Engage in collaborative

Maximize the impact on the ground by sharing best practices and actions to strengthen engagement in Vietnam's sugar sector.

S.CORNELISSEN@CNV.NL +31 628329041

D.BRAS@CNV.NL

+31 643573117

# Let's get to work.



Sustainable  
Palm Oil  
**Dialogue**



Europe



# Coffee Break 11.15 - 11.40





# **BREAKOUT CLIMATE 2**

## **(11.40 - 12.40)**

## Breakout Session 2: Climate

Linking landscape initiatives to  
GHG reporting frameworks



Moderator

**Tim Rayden**

Deputy Director, Landscapes  
& Collaboration,  
Proforest



**Will Schreiber**

Co-Founder,  
3Keel Group Limited

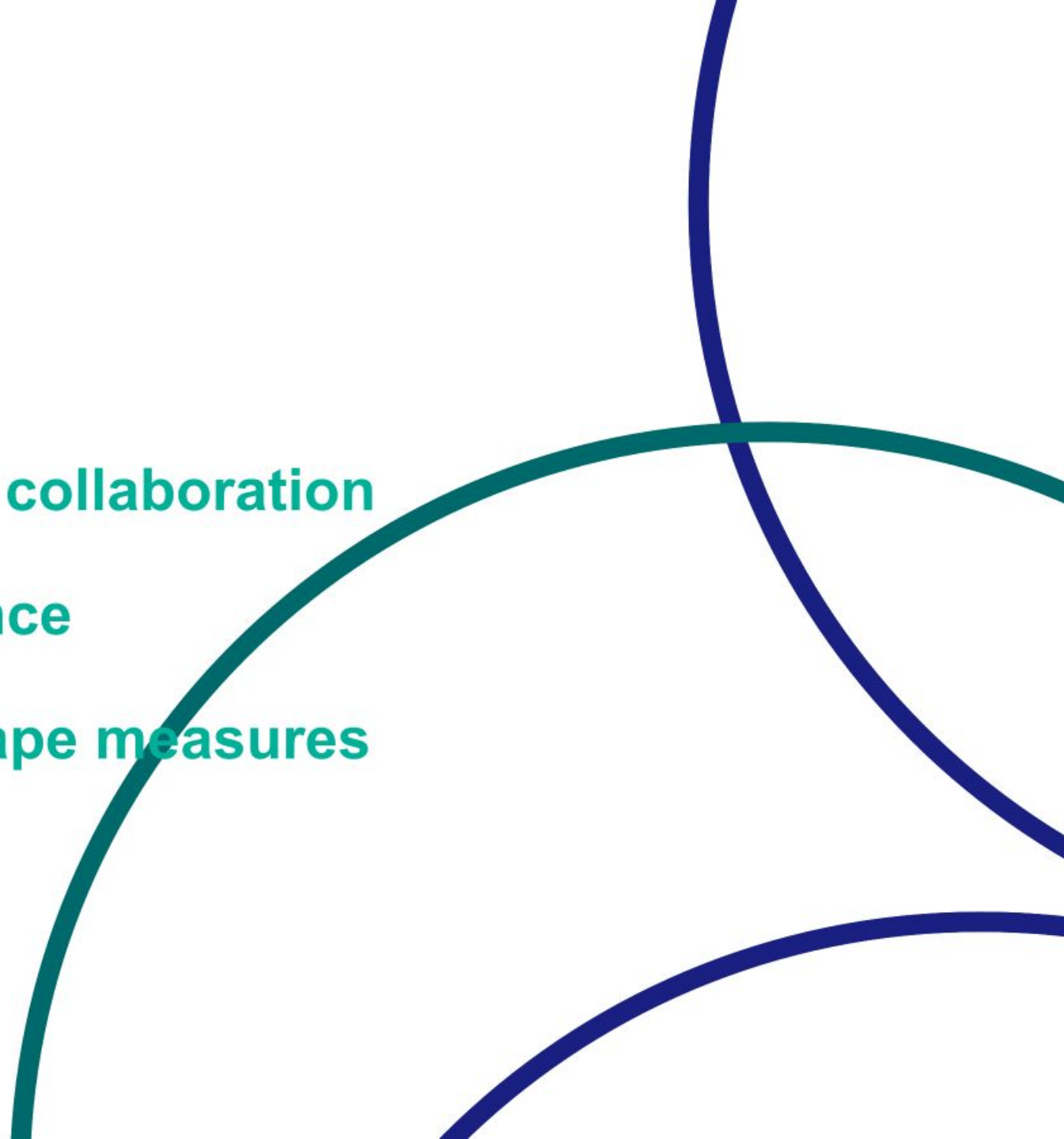
# Contents

**01 Introduction**

**02 Sustain Kutim: A landscape collaboration**

**03 Landscale and 3Keel guidance**

**04 GHG accounting for landscape measures**



# Introduction

- SBTi - Strong corporate motivation to reduce emissions on a Paris Compliant pathway
- Emissions reporting frameworks are based around embodied product emissions, tied to 'working lands'
- Most potential impact for climate and environment comes from actions beyond the farm gate
- There is interest to see how the climate impacts of landscape level action can be better recognised

## The core issues for this group:

- Engagement in landscape initiatives brings many benefits
- SBTi's rules are designed around company-level, value-chain inventories
- Some proposed changes (in SBTi's Corporate Net Zero Standard) give better recognition for beyond value chain actions



# Sustain Kutim

Sustainable Landscape Initiative in Kutai Timur

A landscape collaboration in East Kalimantan,  
Indonesia

**proforest**



# Consortium of SUSTAIN Kutim

Implementor



Funding



Political Partners



# Sustain Kutim landscape initiative

## Context:

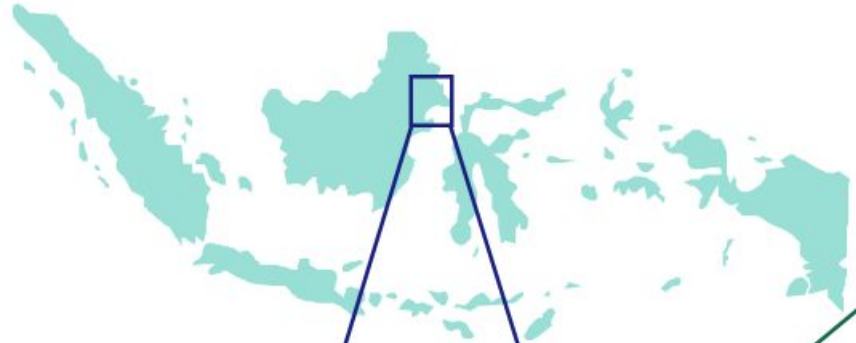
- **East Kutai (Kutai Timur)** regency covers a total area of 3,151,176 hectares, of which **two thirds (67,1%) of the land is forest cover**.
- Approximately 15% of total area is palm oil.

## Initiative:

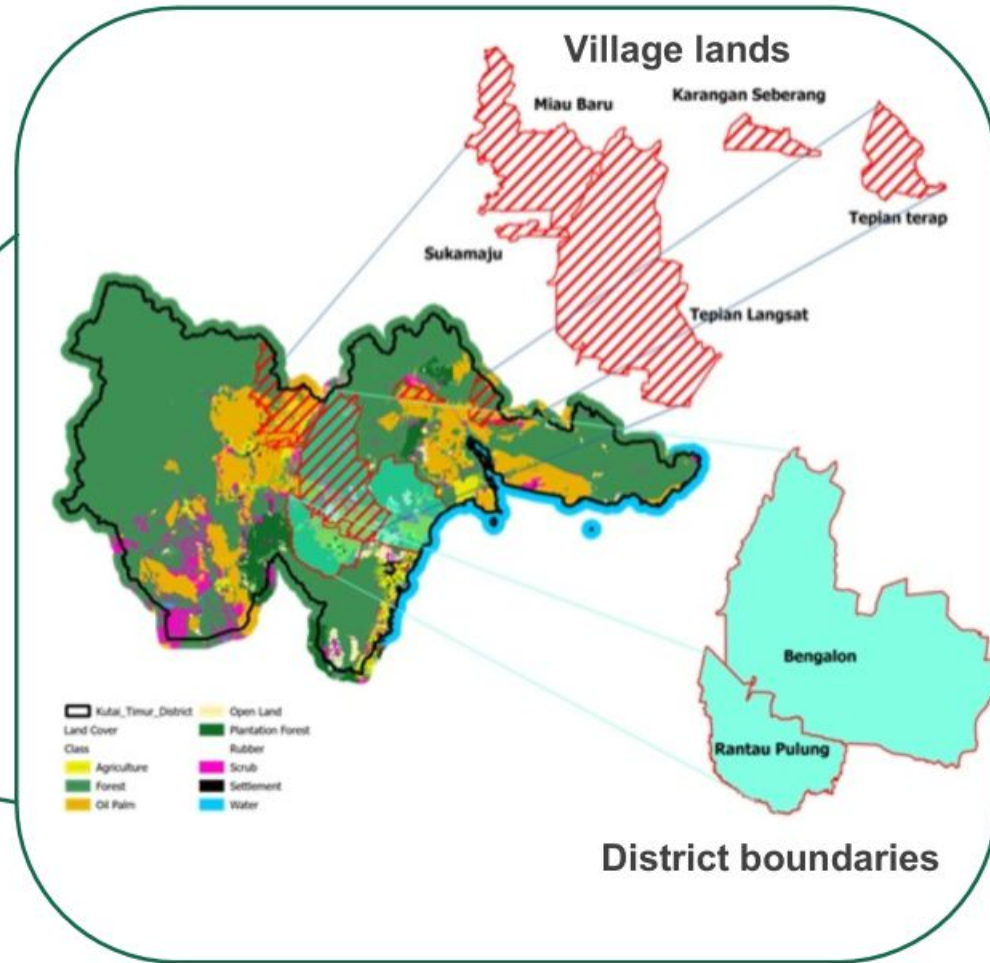
- SUSTAIN KUTIM, launched in 2023, is a public–private partnership led by GIZ, Proforest, and Tanah Air Lestari (TAL).
- It is aligned with the East Kutai (Kutim) District Government’s sustainability and low-carbon development strategy.
- Kutim was identified as a high-priority district for smallholder deforestation in the POCG.



# Kutai Timur District



Kutai Timur District



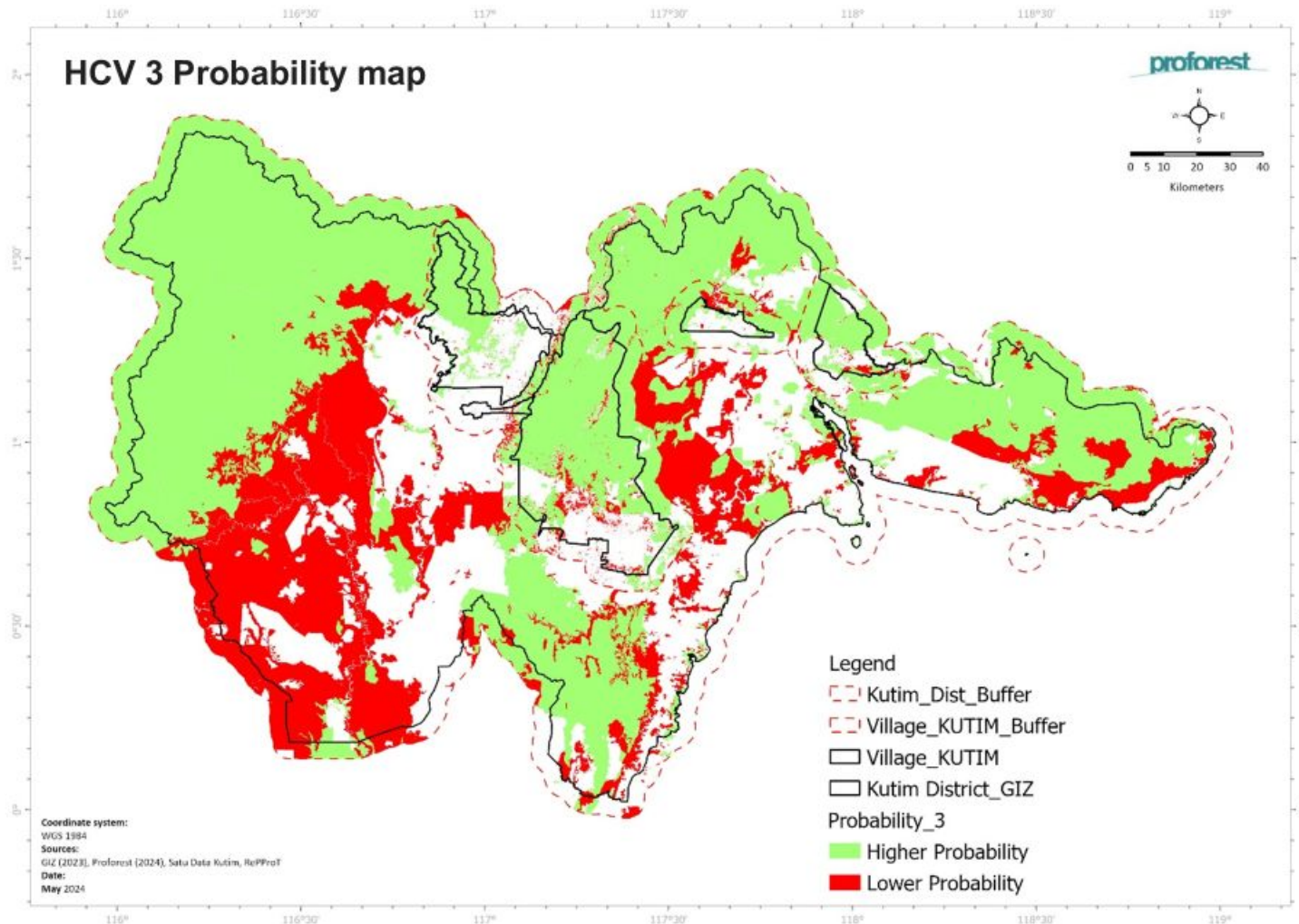
## Overview

# Objectives of the landscape initiative

- Support the district government's commitment to achieve sustainable agriculture production for East Kutai.
- Commitment to designate 75,000 ha HCV Area in East Kutai.
- Explore JA Certification for East Kutai.
- 2 sub-districts (GIZ) – Smallholder's focus (land registration, tenure and good agricultural practices)
- 5 priority villages (Proforest) – Conservation of HCVs
- Ongoing engagement with Government via MSP



# Forest Protection: HCV probability mapping



A key component of Proforest's work with participating villages is to secure **protection of HCV areas**

Success depends on improved governance, (recognition of HCV areas via district spatial plans, and village forest regulations)

# Landscape level measures, Scope 3 and FLAG



## Key concepts

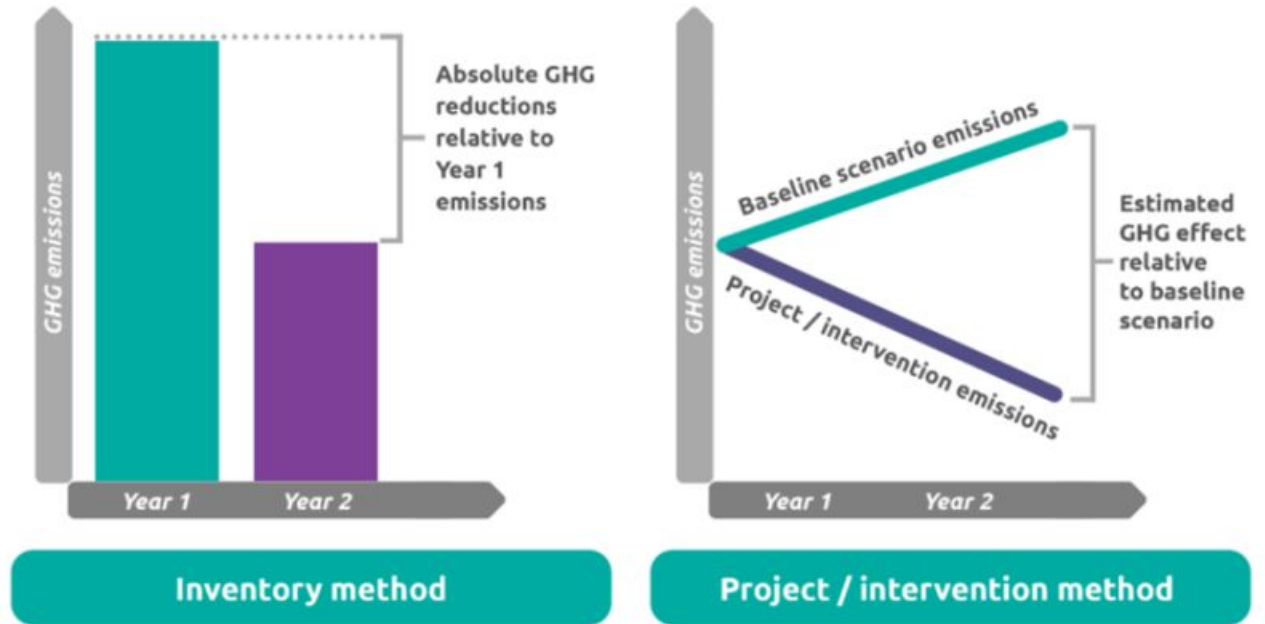
# Attributional accounting

**Attributional accounting**, often referred to as **inventory accounting**, means responsibility for accounting for emissions and removals is allocated to an entity, with a fixed **spatial boundary**.

Attributional accounting is the basis for emissions reporting through the Greenhouse Gas Protocol.

GHGP defines 'emission boundaries' for FLAG products, which are closely tied to the productive lands from which the company is sourcing.






Under the rules of the GHGP, only actions within the emission boundary will affect the carbon footprint of the product, as these can satisfy the conditions for *attribution*.



## GHG Protocol: Land Sector & Removals Guidance

## Key concepts

# Spatial boundaries & why traceability matters

| Spatial Boundary           | Description   |   |
|----------------------------|---|---|
| Global                     | A spatial boundary representing all lands globally where biogenic products or raw materials are sourced from.   |    |
| Jurisdiction               | A predefined, spatially explicit area based on a political boundary where biogenic products or raw materials are sourced from. This includes political boundaries based on a subnational jurisdiction (e.g., state or province), country, or political region (e.g., the European Union) of origin.   |    |
| Sourcing region            | A predefined, spatially explicit land area that supplies a given raw material to the first point of aggregation or first processing facility in the value chain. Sourcing region boundaries may be defined relative to the tier of the value chain that is inclusive of multiple first points of aggregation or first processing facilities with overlapping areas that supply harvested raw materials. |    |
| Land management unit (LMU) | A predefined, spatially explicit area of a given land use, managed according to a clear set of objectives according to a single land management plan to produce a given raw material or set of raw materials. An LMU may represent spatially explicit areas such as a farm, field, or plot.   |   |
| Harvested area             | A spatially explicit area of productive agricultural land that was harvested at a given time to produce the relevant raw material.  |  |

■ Attributable productive lands
 ■ Lands not attributable to the product
 ■ Lands outside the scope 3 spatial boundary

To account for emissions and removals, companies are required to define the appropriate **spatial boundary**.

The right boundary is determined by the level of traceability.

If traceability only to **jurisdiction or sourcing region**, accounting must be based on productive lands only.

If product is traceable to **land management units**, adjacent and proximate lands can be included in scope 3 reporting.

# Reporting of interventions in the landscape



1. ON FARM PRODUCTIVE LAND

2. ON FARM NON-PRODUCTIVE LAND

3. OFF-FARM AREAS

# On farm productive land

Insetting



## 1. ON FARM PRODUCTIVE LAND

### ON FARM PRODUCTIVE LAND

#### Conditions

Defined as the 'emissions boundary' for the product. This is the part of the farm producing the commodity linked to the supply chain

Land management improvements on the productive farm area can reduce **in-scope** emissions associated with production.

#### Eligible actions:

- Reduced fertilizer & other inputs
- Reduced soil disturbance / tillage
- Cover crops
- Agroforestry

#### Claims:

Above measures can be implemented to reduce the product emissions factor when there is product traceability to land management unit level.

# Off farm areas

## **\*Ongoing Emissions Responsibility**

*Proposal to recognise early action beyond agreed emissions reductions*

**\*Residual emissions:** Emissions that remain when all possible emission *reductions*. Have been achieved

## OFF FARM AREAS

### Example actions

- Community forest conservation/ restoration
- Protected area finance
- Off-estate restoration
- Jurisdictional support
- Purchase of high-quality carbon credits from projects or jurisdictions.

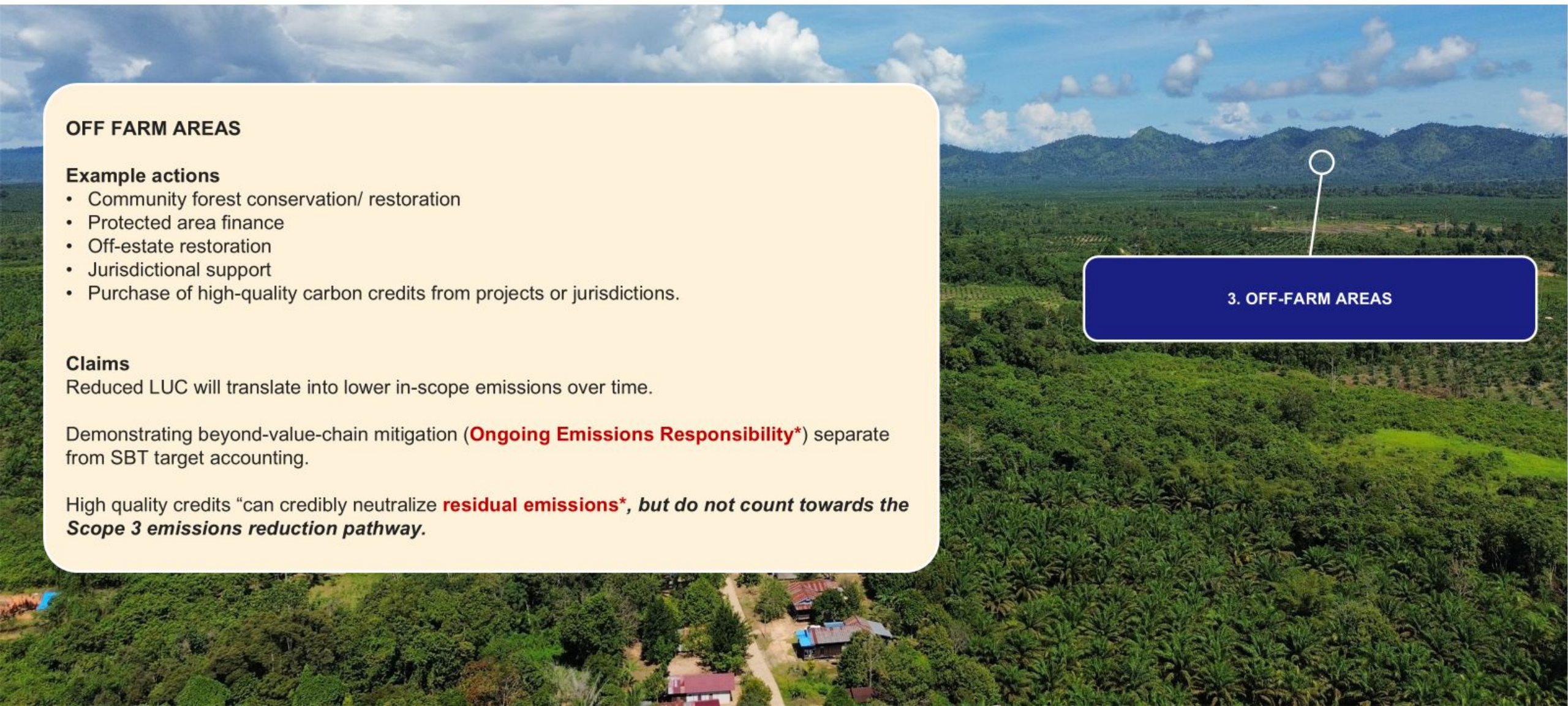
### Claims

Reduced LUC will translate into lower in-scope emissions over time.

Demonstrating beyond-value-chain mitigation (**Ongoing Emissions Responsibility\***) separate from SBT target accounting.

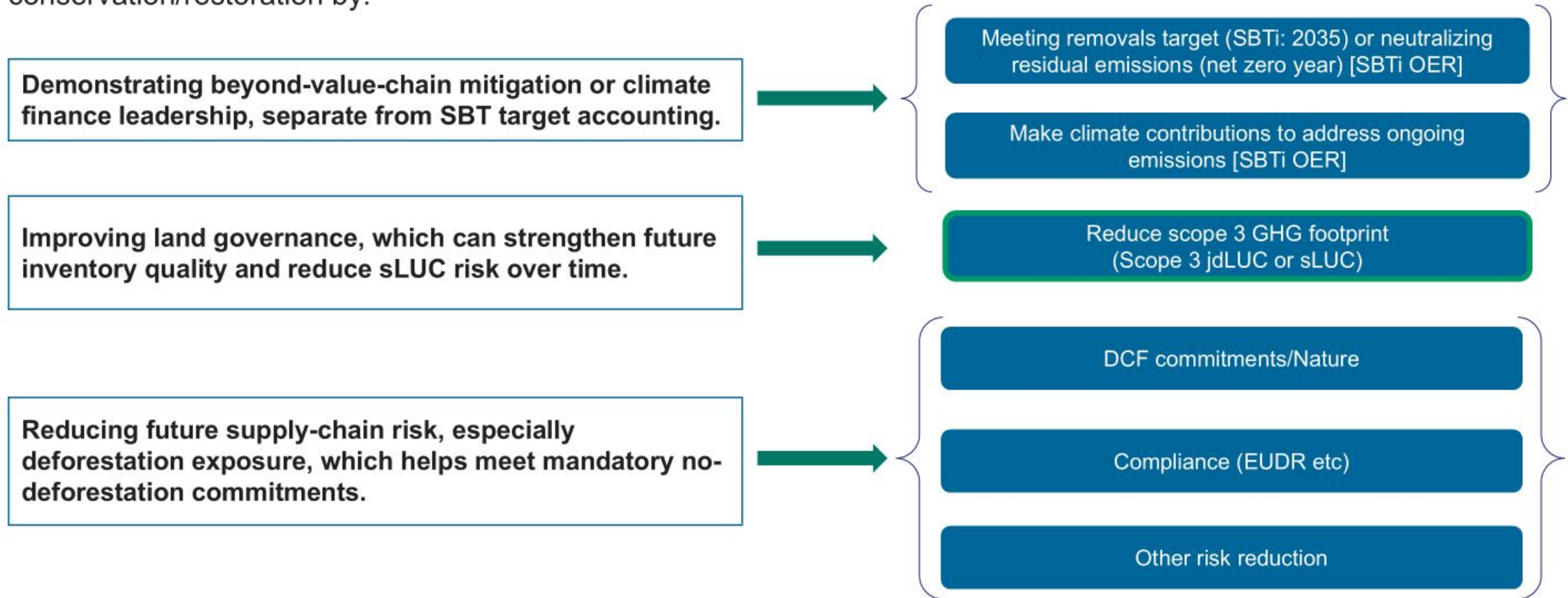
High quality credits “can credibly neutralize **residual emissions\***, *but do not count towards the Scope 3 emissions reduction pathway.*

3. OFF-FARM AREAS



# Benefits of off-farm conservation/restoration

Companies can gain real benefit through off-farm forest conservation/restoration by:



# Summary

- Under current SBTi FLAG rules, companies generally cannot count off-farm forest conservation or restoration toward near-term FLAG target achievement.
- But companies can still gain business and climate value from these actions through no-deforestation implementation, sourcing-risk reduction, improved landscape governance, better traceability, and, potentially, recognition for taking responsibility for ongoing emissions.



**Thank you**

**[www.proforest.net](http://www.proforest.net)**

**proforest**





## Guidance for landscape initiatives

### Engaging with climate mitigation projects

Sustainable Palm Oil Dialogue  
Chester

9 June 2026

Will Schreiber



Creators of  
**LENS**® | LANDSCAPE  
ENTERPRISE  
NETWORKS

# Our expertise

We offer a unique combination of joined-up expertise across climate, the circular economy, supply chains, agriculture and landscapes.



Delivers strategic and practical support to improve resilience and productivity in supply chains and landscapes.

- Regenerative agriculture
- Monitoring, reporting & verification
- Sustainable sourcing strategies
- Landscape transformation



Offers trusted expert advice to assess impacts, create strategy, and translate ambitious plans into action.

- Nature assessment
- Climate risk & resilience
- GHG accounting
- Sustainability strategy & roadmaps
- Life cycle assessment



Supports businesses to mitigate deforestation; improve traceability; and drive sustainable supply chains.

- Deforestation & conversion
- EUDR & due diligence
- Coalitions & sector action on DCF
- Supply chain mapping

Our flagship Landscape Enterprise Networks (LENs) programme brings **organisations together** to co-fund regenerative agriculture and nature-based solutions to drive landscape resilience.



€30m

Funding for farmers since 2021



49,000t

Carbon emissions reductions & removals in 2024



350+

Total farms across 80,000+ha of land




Working with

# Accounting v Impact

Supply chains are rarely linear



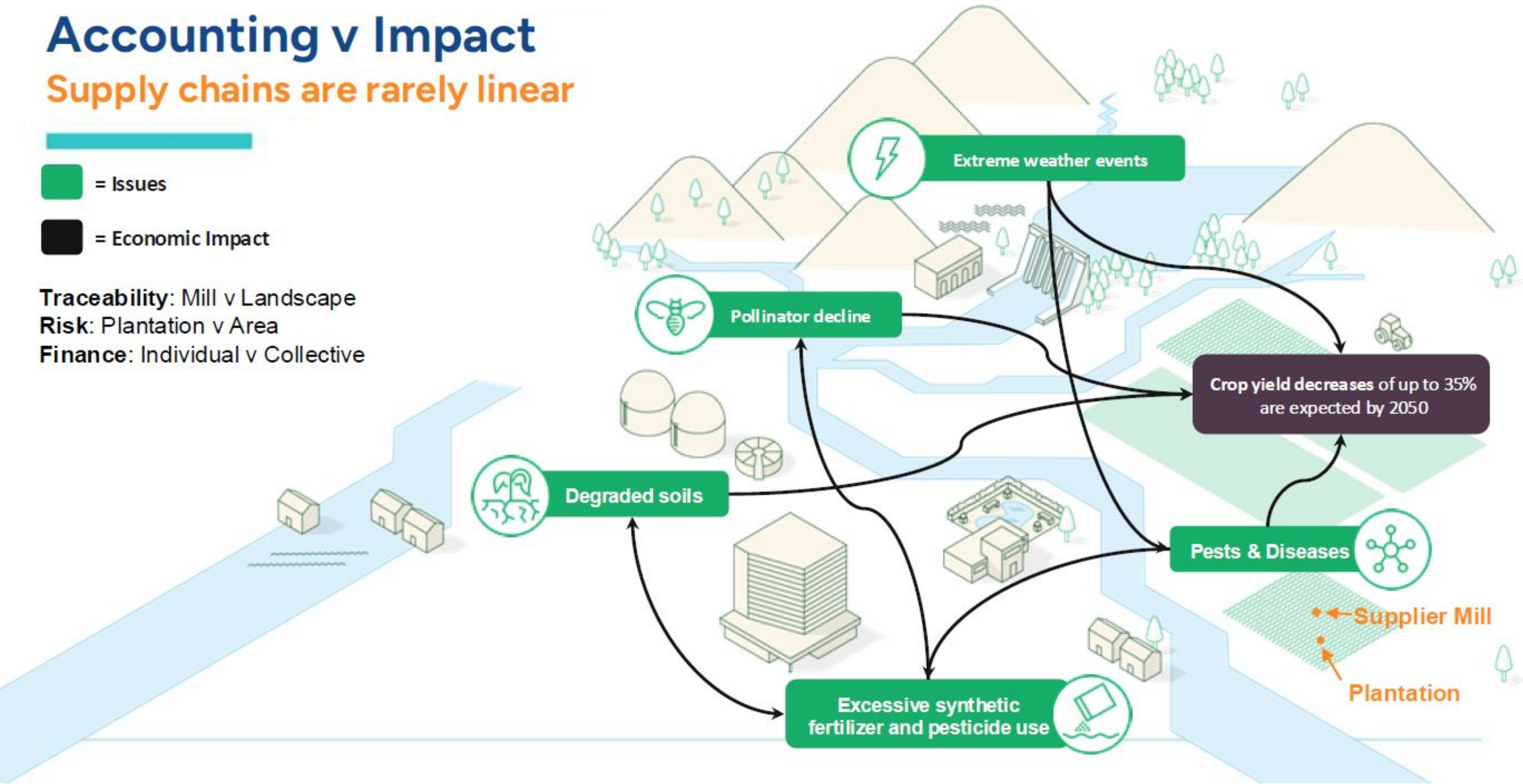
 = Issues

 = Economic Impact

Traceability: Mill v Landscape

Risk: Plantation v Area

Finance: Individual v Collective



# A need for more (!) guidelines

## Challenges LandScale is responding to



Carbon tunnel vision

Coordinating multiple stakeholders

Establishing baselines

Embedding projects into a landscape context

Decreasing confidence in carbon markets

Permanence challenges

Wider alignment with landscape and initiatives

Complex and costly MRV

# Looking beyond carbon

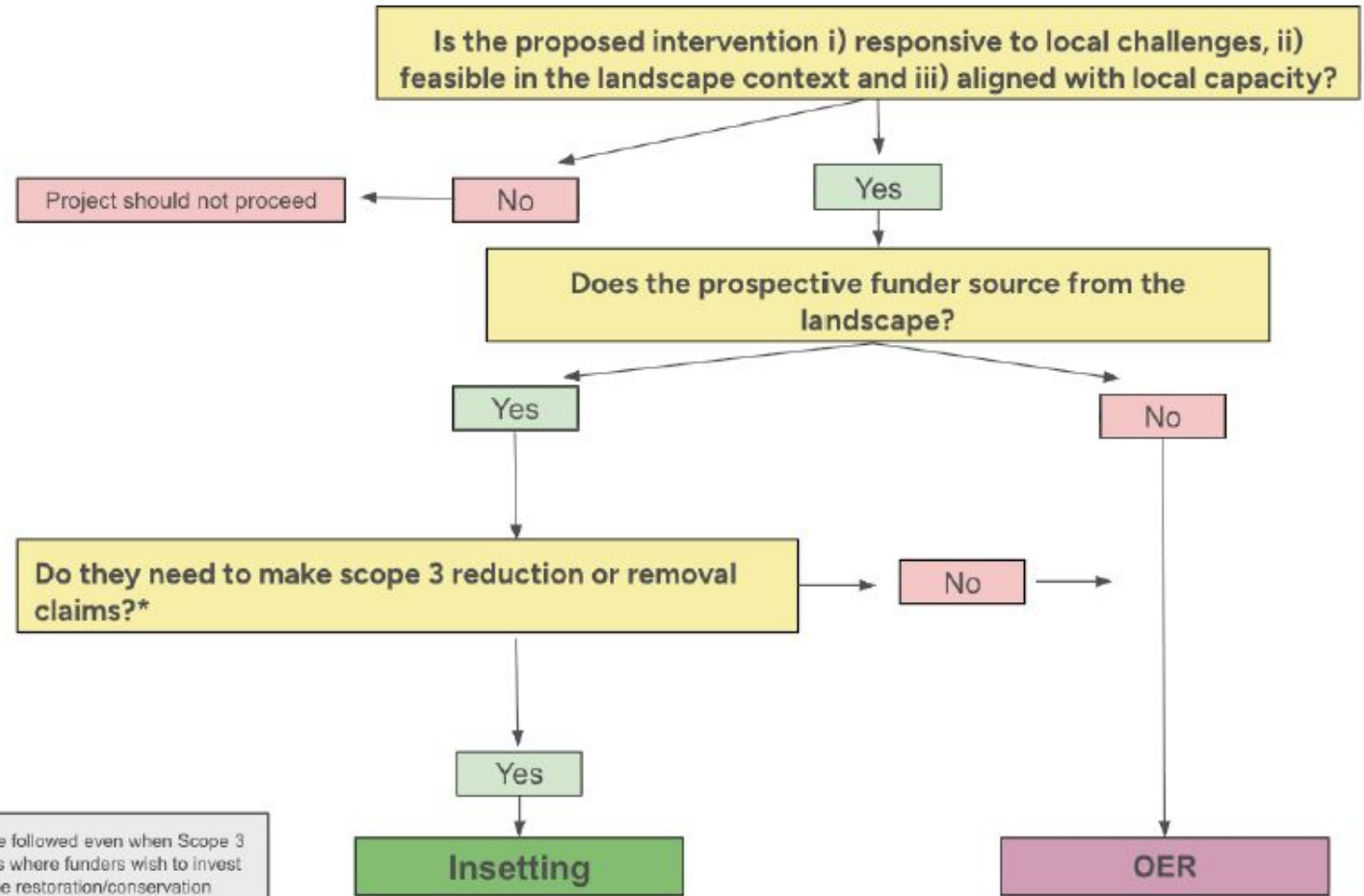
## ... and not just traceability

Focus should **not** just be a binary view of whether materials can be linked to the downstream customer.

Principle 1

Principle 2

\*An OER pathway can still be followed even when Scope 3 claims can be made, in cases where funders wish to invest in activities such as landscape restoration/conservation



# Guidance

## LandScale Framework in practice

---


**Theme 1:** The landscape context and supply chain connections

**Theme 2:** Stakeholder engagement for better carbon outcomes

**Theme 3:** Feasibility, cost and commercial potential of carbon interventions

**Theme 4:** Identifying partners and approaches to developing climate projects

**Theme 5:** Requirements for robust MRV

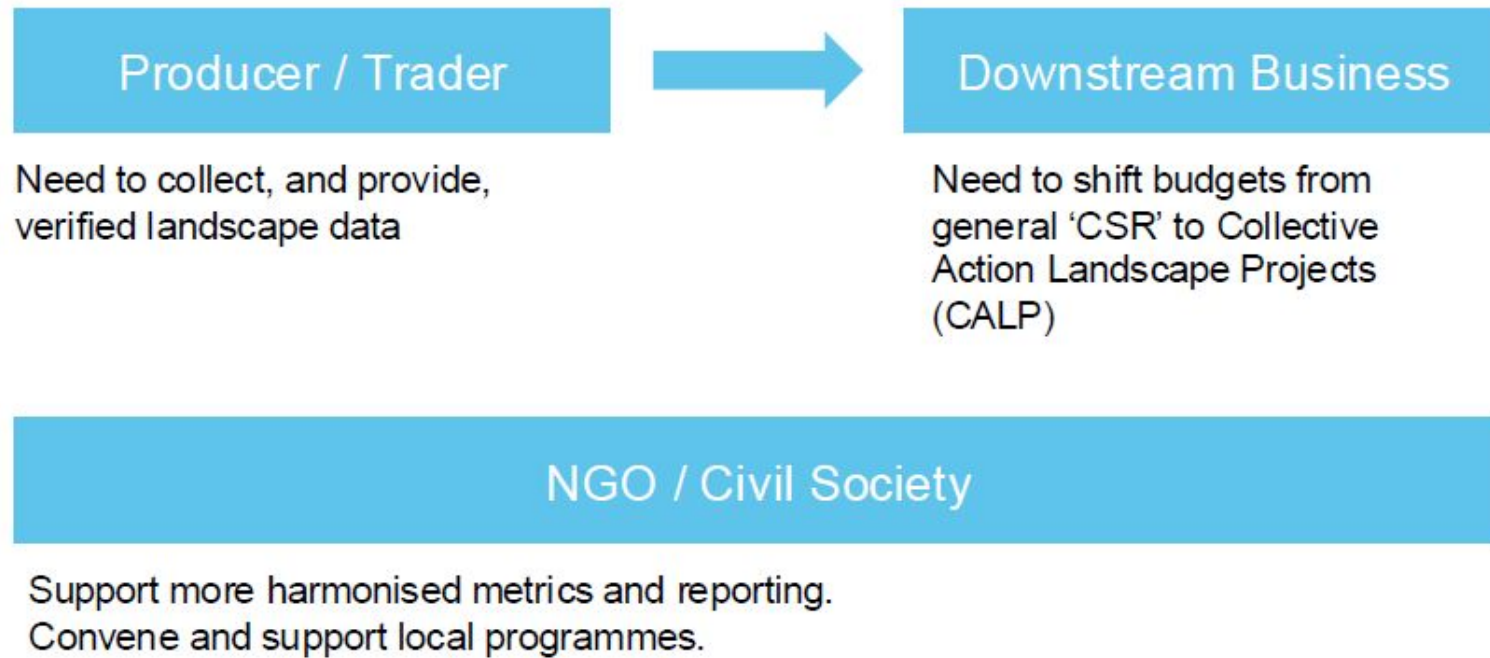


Follows a stepped process to support landscape initiatives from conception to practical delivery

# So what...

## Your takeaway

---



# 3keel



Contact **Will Schreiber**  
for more information

[www.3keel.com](http://www.3keel.com)

3Keel Group Ltd  
7 Fenlock Court  
Blenheim Business Park  
Oxfordshire  
OX29 8LN  
United Kingdom

t: +44(0) 1865 236 500



# Lunch Break

## 12.40 - 13.40



# **BREAKOUT CLIMATE 3**

## **(14.20 - 15.20)**

## Breakout Session 3: Climate

### Closing the Loop on Climate Responsibility



Moderator

**Ruben Brunsveld**  
Deputy Director EMEA,  
RSPO



**Mark Wong**  
SDGuthrie



**Robert Bailey**  
Silbury



**Richard Vaughan**  
Group Compliance Director,  
Delifrance

Sustainable  
Palm Oil  
**Dialogue**



Europe



# Coffee Break 15.20-15.40



Sustainable  
Palm Oil  
**Dialogue**



Europe

**Thank you  
for attending SPOD 2026!  
See you next year!**



**idh**  
transforming markets

**proforest**

